

31st Annual



Rat Island Regatta 2026



Sound Rowers and
Rat Island Rowing and Sculling Club



Notice



This presentation covers important aspects of the race. There will be a *mandatory* Pre-Race meeting at 9:15 where we will discuss these details and specific questions can be addressed.

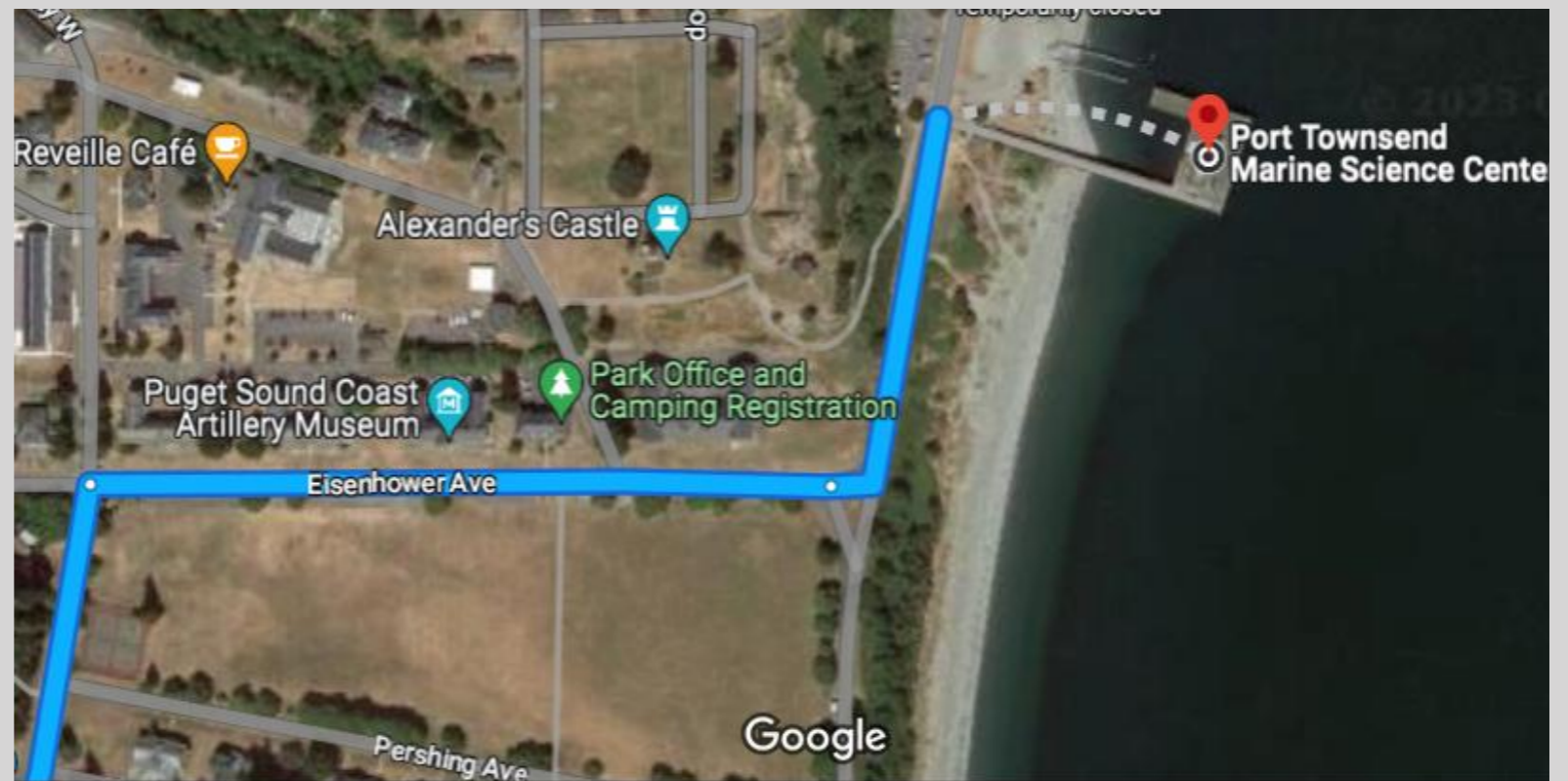
- Date: Saturday June 20, 2026
- Pre-Race Meeting: 9:15 a.m.
- Start: 10 a.m.
- Distance: Long course 7.8 mi.,
Short course 2.9 mi.
- Location: Fort Worden beach
area just North of Marine
Science Center pier
- Race Director: Noah Seixas
text: 206 679 3087
noahseixas@gmail.com

Race Information



Directions to the Start

- From Port Townsend, follow the signs to the main (South) entrance of Fort Worden.
- Turn right (East) and head downhill to the beach.
- Follow along the waterway to the beach just North of the pier.
- Port Townsend Marine Science Center
Fort Worden Park
532 Battery Way,
Port Townsend, WA 98368
REQUIRES DISCOVER PASS



Parking/Check-in



Red X Large boat trailers must park in one of the larger lots

White Triangle Check-in tent opens day of race at 7am..

Gold Star kitchen shelter

Green Strip parking and launch area

Black Arrow Kiosk where you can purchase Discover pass (required)

Check-in procedure

Check in at 7am. Come early to avoid the rush. Confirm your boat class and course length.

Pick up your race number.

Boats can be staged on the beach North of the pier where there is ample room



Boat Requirements

- Your boat must be safe, seaworthy and appropriate for open water
- Race number should be affixed securely to the foredeck so that they are visible to the timers and safety boats. Duct tape will be provided

Personal Requirements

- You must have a Coast Guard approved PFD aboard your vessel.
- You must carry a whistle or horn or other noisemaking device.
- You must be capable of self-rescue in any conditions present on race day.
- Surf skis, outrigger canoes and paddleboards must have a functional leash attaching paddler to craft.

Failure to meet these requirements can result in disqualification



Where and when to launch

10am One Mass Start
All Classes. Both Courses

Starting Sequence
(horn on pier)

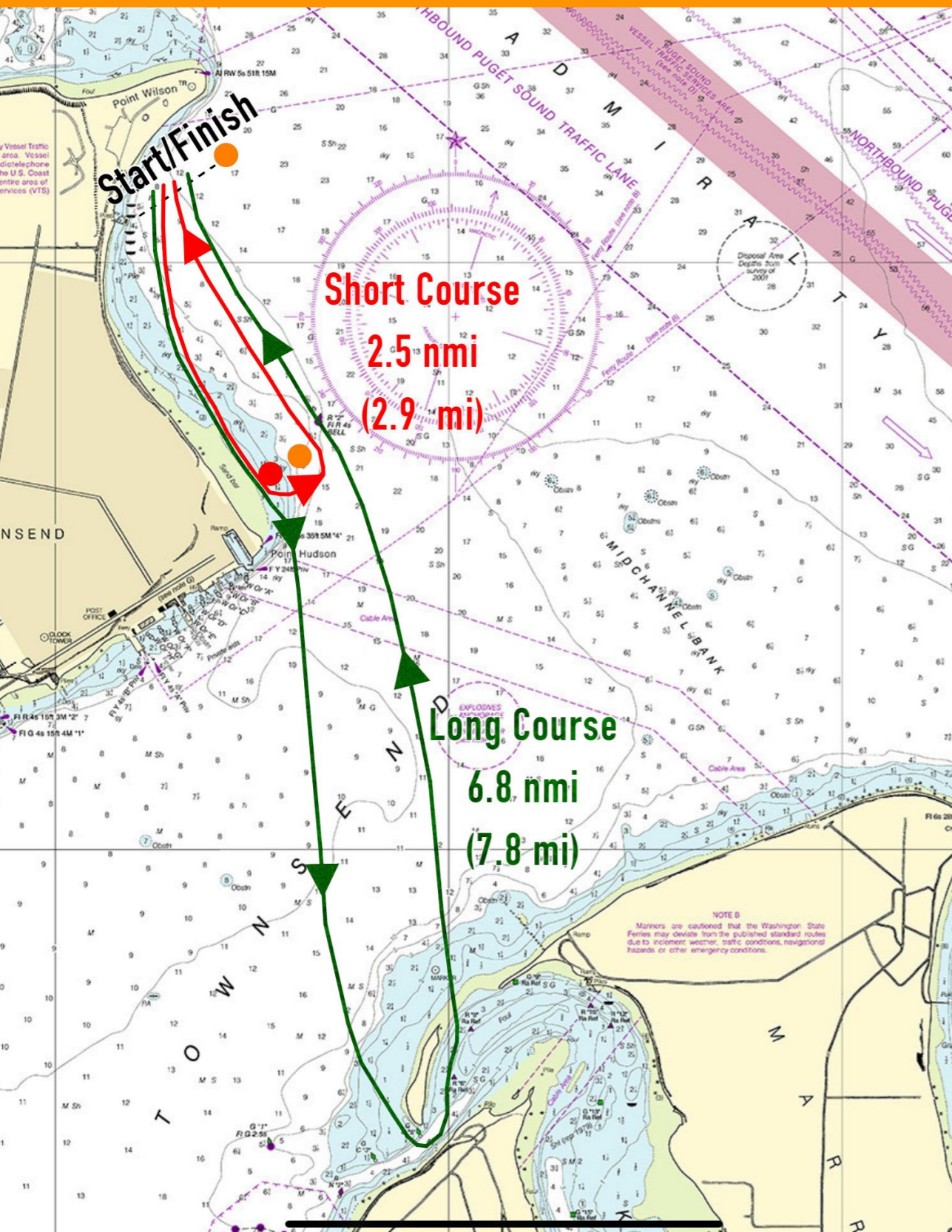
9:55 – 5 short blasts

9:59 – 1 short blast

10:00 – 1 long blast:
GO!



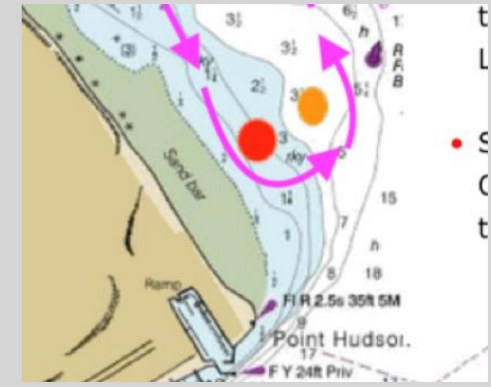
Course Map



Short Course

Counterclockwise round **two** buoys just outside Point Hudson, keeping both buoys to **port**.

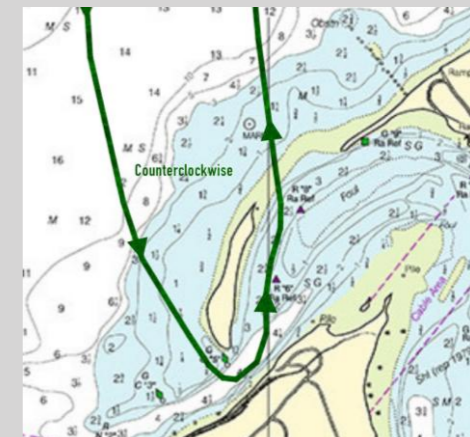
Then back to Start/Finish line.



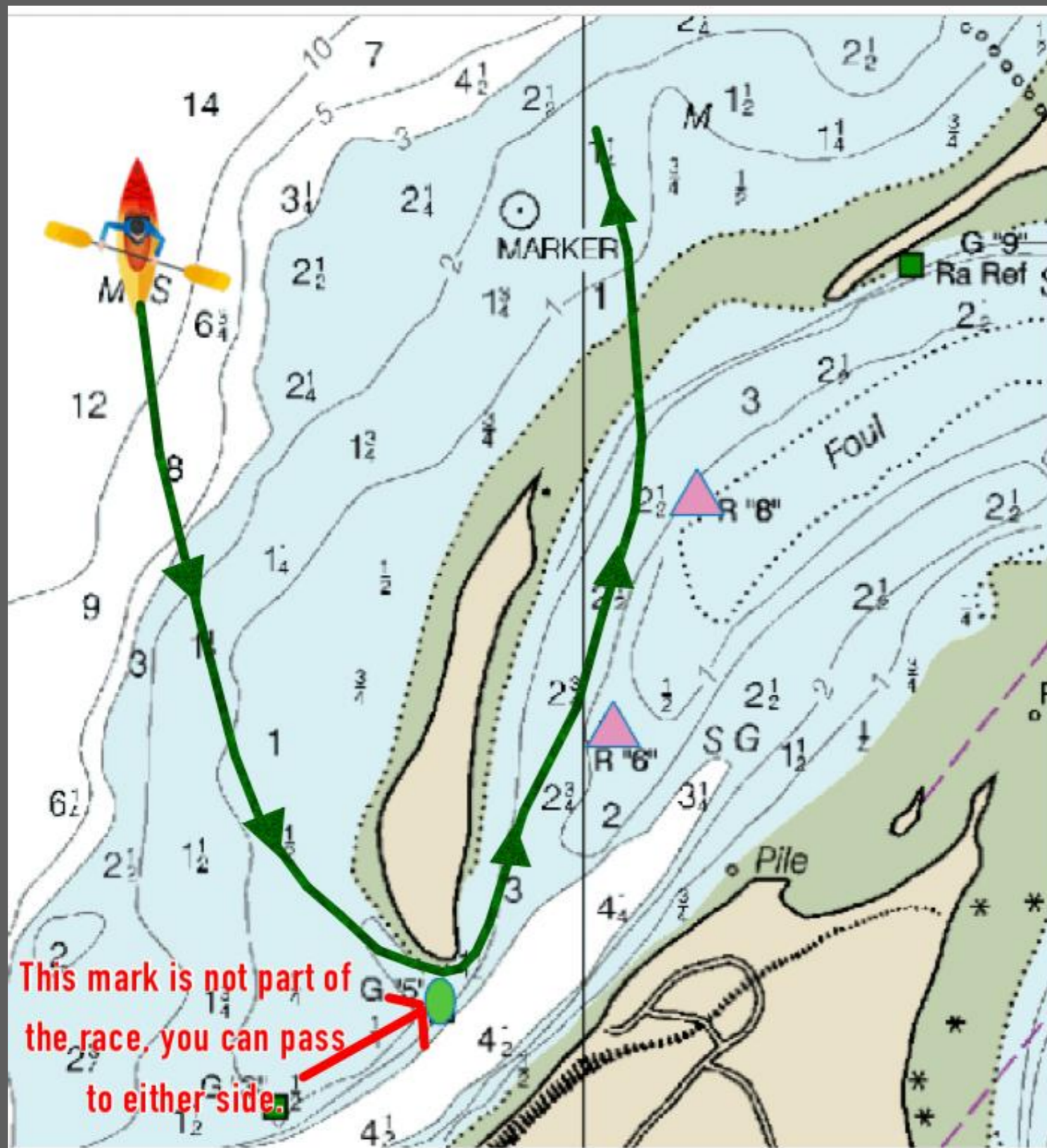
Long Course Head toward Rat Island, staying between the short course buoys and Point Hudson shoreline.

Then round Rat Island counter clockwise

Return - use either side of short course buoys on your way back to Start/Finish line.



Rat Island



Rat Island Hazards

- Strong currents on back side of Rat Island
- Steep sheer on South end

Marrowstone Side

- Submerged post
- Offshore sand bar outside the cut
- Safest bet is through the center

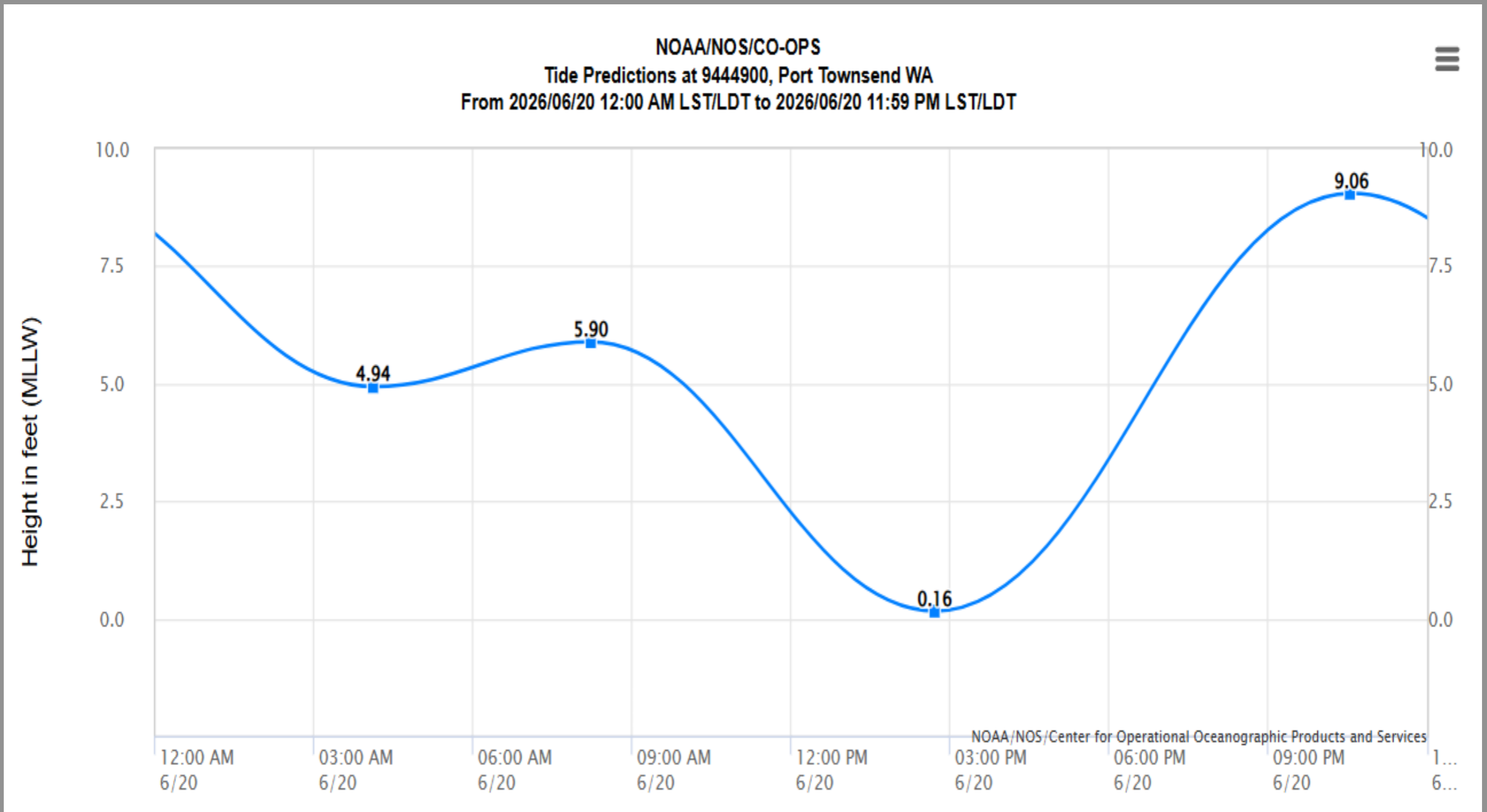
Navigational Markers on back side of Rat Island also hazards b/c of strong current. Red Triangles and Green Nun buoy

All nav markers are now steel pilings

This mark is not part of the race, you can pass to either side.

SM2

Race Day Tides



Hazards

- Cold water
- Moderate flood throughout race
- Commercial and recreational vessels. Give way to them.
- Ferry crosses Long Course westbound from Coupeville @ 10:40 am and eastbound from Port Townsend @ 11:05 am.

Yield and take their stern.

- Outlying rocks and shallow water along the shore between the start and Point Hudson.
- Shallow water in the cut around Rat Island.



Safety

- PFD and whistle are required.
- You must have the ability to self-rescue in the conditions present on race day.
- Surfskis, Ocs and SUPs must have a securely attached leash.
- High visibility clothing is recommended.
- Please carry a VHF radio and/or cell phone in a waterproof bag.
- Use good and honest judgement about your abilities and the conditions present.
- You are obligated to aid any racers in distress. Be sure they are in their boat and underway before leaving them. You will be credited for time spent assisting.
- If you require assistance, signal one of the 4 or 5 safety boats by waving your hand, paddle or oar over your head.
- If race is cancelled AFTER the start, safety boats will blow their horns repeatedly and direct racers to shore.

At the Finish

- Your finish will be signaled by race officials on the pier with a short horn blast.
- Please keep clear of the finish line after you have completed the race.
- Return your race number and head to the kitchen shelter area for lunch and awards.



Awards



- Ribbons will be presented to the top three finishers in each class.
- First overall will have their name hand "engraved" on the the Rat Island Cup!





Thank You.

**We at Sound Rowers
appreciate your
participation in the Rat
Island Regatta.**

**Thank you for
continuing to support
the fun and competition
of racing.**