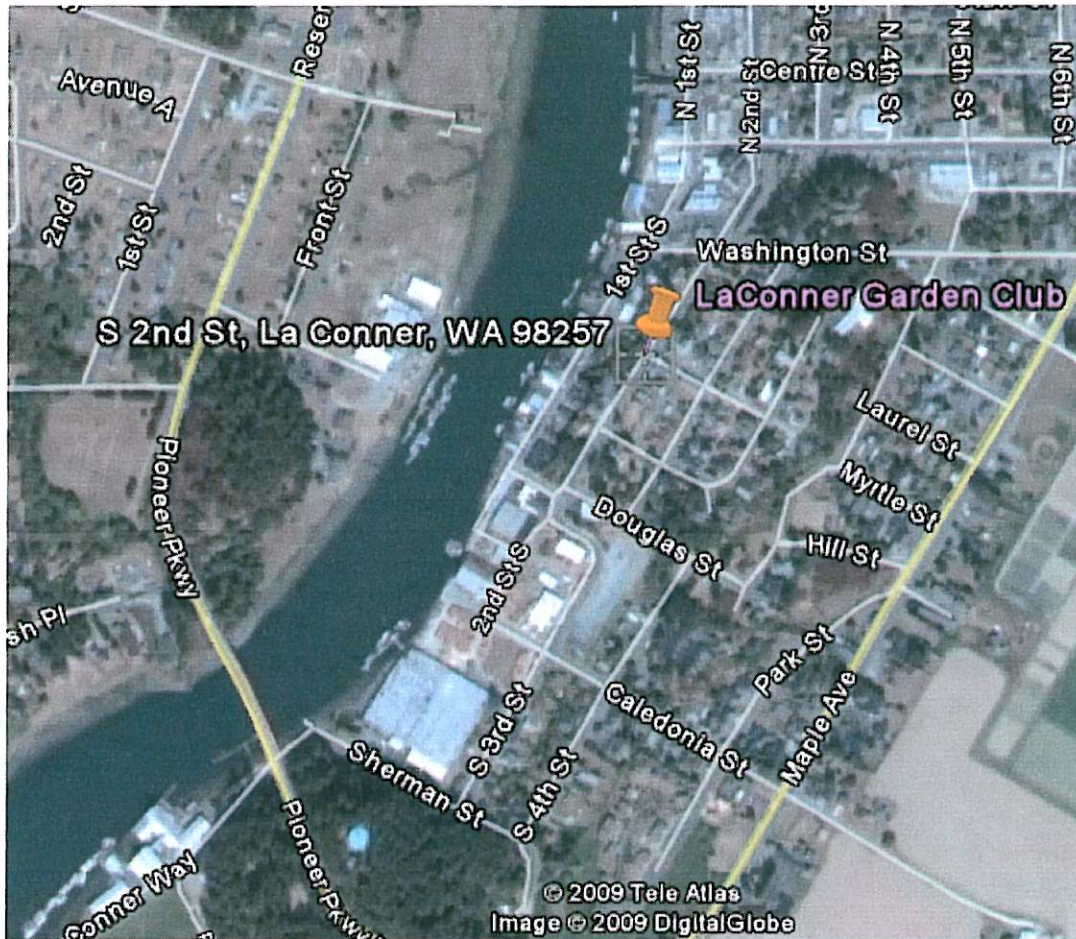


LaConner 2009 -Post Race Awards



Screen clipping taken: 2/1/2009, 3:23 PM

Directions to LaConner Garden Club:

The 2009 post race soup'n'bread will be at LaConner Garden Club after the race. To get to the Garden Club – go back to Conner Way to Sherman St. and left on S. 3rd St to Caledonia. At the stop sign at Caledonia, go straight and follow S. 3rd - it goes around a corner to the left and up a little hill. At the top of that hill is a stop sign and S. 3rd has become S. 2nd and you're now at the corner of S. 2nd St and Commercial (Maple Hall is on the left). Go straight at this stop sign and the Garden Club is one block up on the left at 622 S. 2nd Street. You can park on the street all around this neighborhood (or you can go back to the big parking lot down the hill on S. 3rd Street - but it's a pay lot).